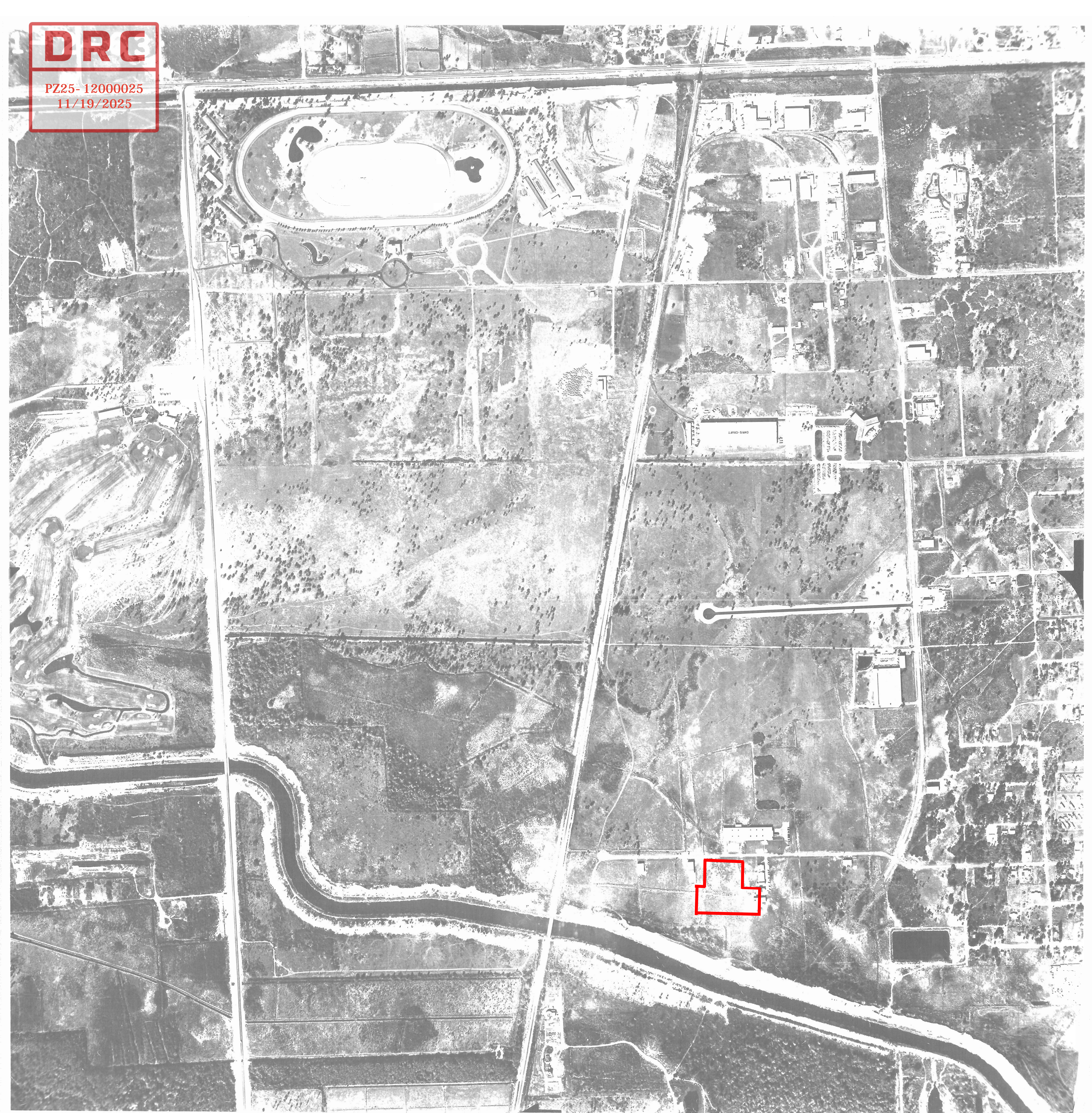


DRC

PZ25-12000025
11/19/2025



DRC

DRC

PZ25-12000025
10/01/2025

PZ25-12000025
08/06/2025



DRC

PZ25- 12000025
11/19/2025



DRC

DRC

DRC

PZ25-12000025
11/19/2025

49-14-12



DRC

DRC

PZ25-12000025
10/01/2025

PZ25-12000025
08/06/2025

2977

DRC

PZ25- 12000025
11/19/2025

BROWARD COUNTY, FLORIDA

SCALE 1" = 300'

3 -49-42



DRC

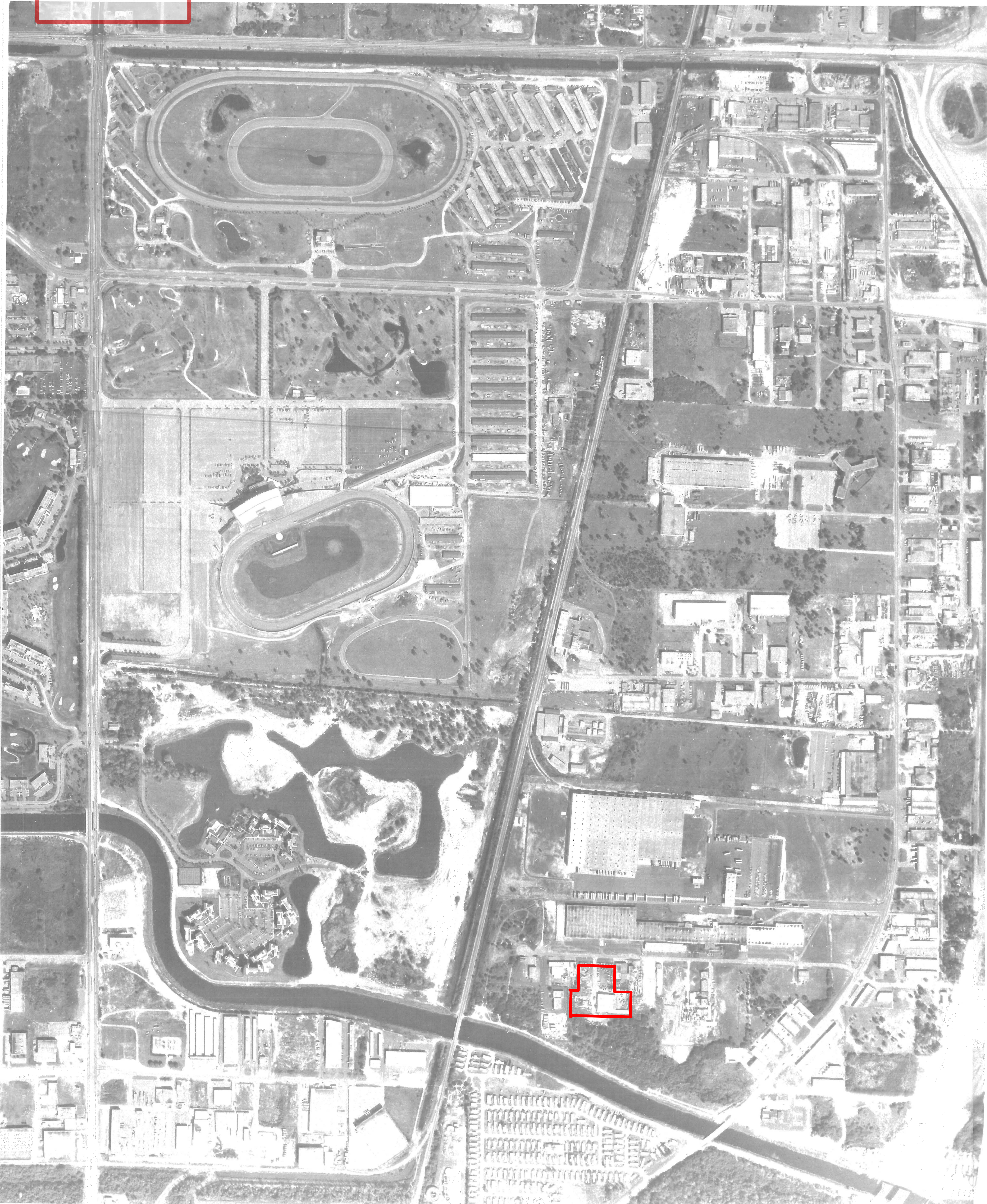
DRC

PZ25-12000025
10/01/2025

PZ25-12000025
08/06/2025









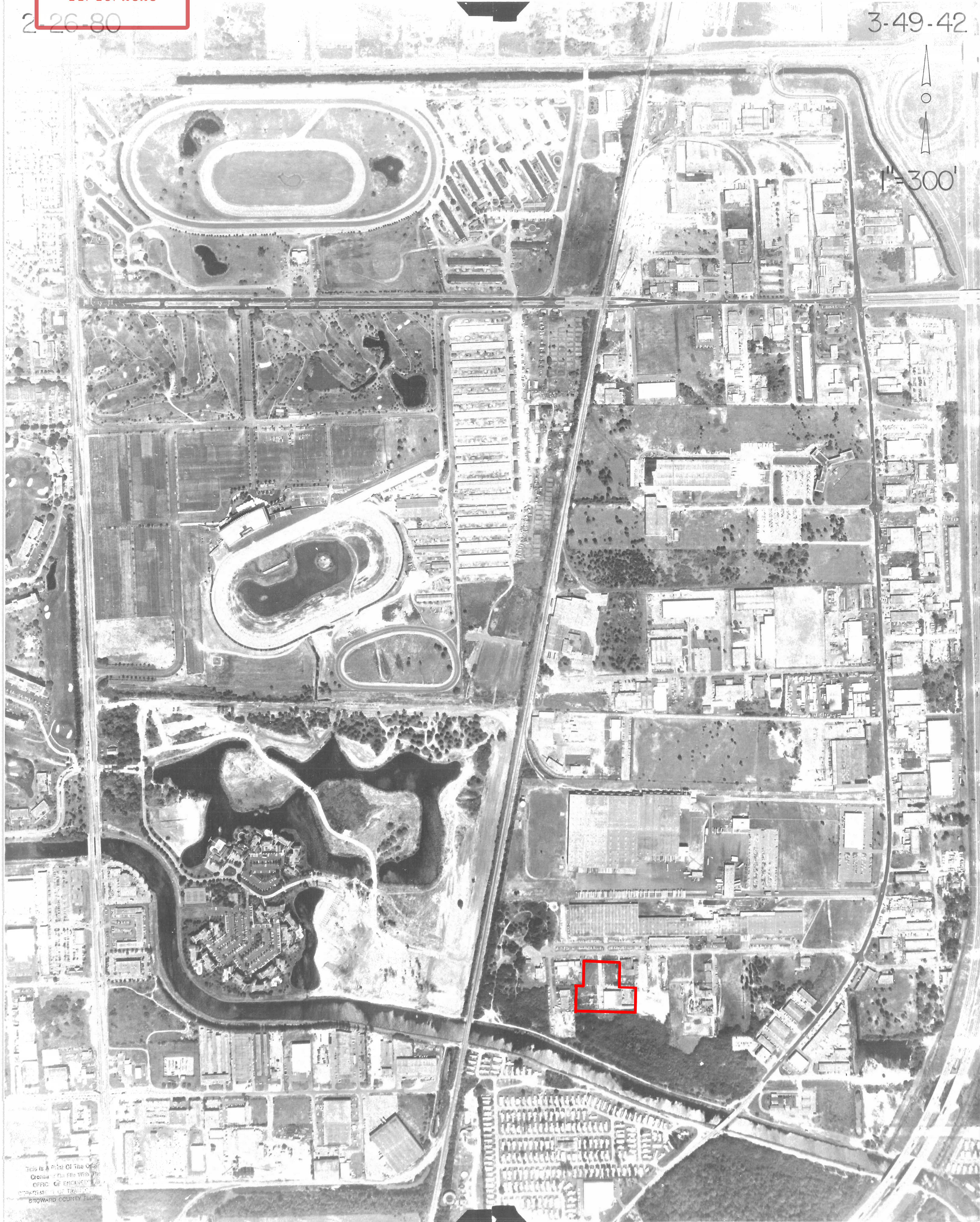


DRC

PZ25-12000025
10/01/2025

DRC

PZ25-12000025
08/06/2025



3-49-42



1"=300'

This is a Plot Of The Official
Crown - On File With The
OFFICE OF ENGINEERING
BROWARD COUNTY FLORIDA

POINT			STATE PLANE COORDINATES			POINT			STATE PLANE COORDINATES		
			X	Y					X	Y	
A			776514.25	687059.44		E			779705.87	685817.06	
B			776638.62	683051.94		F			781487.44	684689.38	
C			782179.56	683456.06		G			782269.00	687317.31	
D			777823.00	686275.50		H			780116.50	687912.06	



BROWARD COUNTY, FL.

3 49 42 SOUTH

SECTION TOWNSHIP RANGE

FLIGHT DATE: MARCH, 1984
BY BOSWORTH AERIAL SURVEYS INC. - LAKE WORTH, FL.

33-48-42	34-48-42	35-48-42
4-49-42	THIS SHEET	2-49-42
9-49-42	10-49-42	11-49-42

This is a copy of the original mylar on file with the Engineering Division, Public Works Department, Broward County, Florida.

Permission to copy this photograph is granted provided that the copies are not made or reduplicated for distribution for direct commercial advantage and that the entire title block appear on all copies. To copy or redistribute otherwise requires a fee and/or the specific permission of the Broward County Office of Planning.

Broward County makes no claim or guarantee regarding the accuracy of any copies.

SCALE 1"=300'

N

300 0 150 300

STATEMENT OF ACCURACY TO THE USER: THE USER OF THIS PRODUCT HAS
BOSWORTH AERIAL SURVEYS, INC. 10000 N. W. 10TH AVE. SUITE 100, LAKE WORTH, FL 33466





BROWARD COUNTY, FL.

3 49 42S 2-5-90
SECTION TOWNSHIP RANGE DATE OF FLIGHT

PAN AMERICAN SURVEYS INC. MIAMI, FL.

THIS IS A COPY OF THE ORIGINAL RECORD FILE WITH THE ENGINEERING DIVISION, PUBLIC WORKS DEPARTMENT, BROWARD COUNTY, FLORIDA.

PERMISSION TO COPY THIS PHOTOGRAPH IS GRANTED, PROVIDING THAT THE COPIES ARE NOT MADE OR REDUPLICATED FOR DISTRIBUTION FOR DIRECT COMMERCIAL ADVANTAGE, AND THAT THE ENTIRE TITLE BLOCK APPEARS ON ALL COPIES. TO COPY OR OTHERWISE REDISTRIBUTE REQUIRES A FEE AND/OR THE SPECIFIC PERMISSION OF THE BROWARD CO. OFFICE OF PLANNING.

BROWARD COUNTY MAKES NO CLAIM OR GUARANTEE REGARDING THE ACCURACY OF ANY COPIES.



SCALE: 1" = 300'

DRC

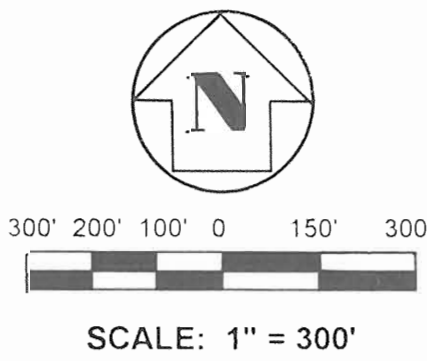
PZ25- 12000025
11/19/2025

This is a copy of the original mylar on file with the Engineering Division, Public Works Department, Broward County, Florida.

Permission to copy this photograph is granted, providing that the copies are not made or reduplicated for distribution for direct commercial advantage, and that the entire title block appears on all copies. To copy or otherwise redistribute requires a fee and/or the specific permission of Broward Co.

Broward County makes no claim or guarantee regarding the accuracy of any copies.

T 49 S - R 42 E		
33	34	35
4	THIS SHEET	2
9	10	11



BY: KUCERA SOUTH, INC. - LAKELAND, FLORIDA

BROWARD COUNTY, FL.

DATE OF FLIGHT:
JAN. 26, 1995

SECTION
3
SOUTH

TOWNSHIP
49

RANGE
42



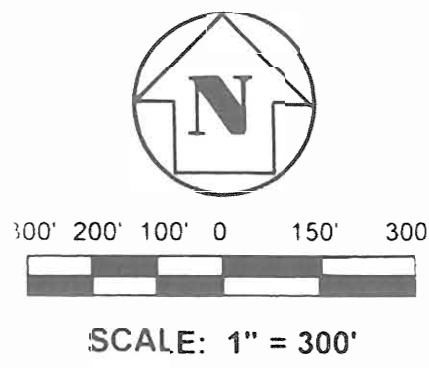
DRC

DRC

This is a copy of the original mylar on file with the Engineering Division, Public Works Department, Broward County, Florida.

Permission to copy this photograph is granted, providing that the copies are not made or reduplicated for distribution for direct commercial advantage, and that the entire title block appears on all copies. To copy or otherwise redistribute requires a fee and/or the specific permission of Broward Co.

Broward County makes no claim or guarantee regarding the accuracy of any copies.



BY: 3Di FLORIDA, LLC. HOLLY HILL, FL

BROWARD COUNTY, FL.

DATE OF FLIGHT :	SECTION	TOWNSHIP	RANGE
JAN. 21, 2000	03	49S	42E
	SOUTH		

